

Wildflowers

of the Foothills and Mountains of Northeastern Victoria

This brochure shows a selection of wildflowers from the foothills and mountains in the Goulburn-Broken and Northeast catchments (see map at back). The photos may assist in identifying some of the more common groundlayer species. The bioregion colour codes and the distribution map will help you with your identification (bioregion descriptions can be found at the DSE website listed below). The symbol ~ indicates that no other species in that genus are likely to be encountered. Photos show plants in flower, however some colours may vary depending on location.

This brochure provides a good starting point, but many species can look very similar. See the references below for accurate species identification.

Also refer to the guide for the Wildflowers of the Plains and Low Hills in Northeastern Victoria – some of those species are also found here. Aquatic, alpine and annual plants are generally excluded from this guide.

HOW CAN I HELP?

To help to conserve places where wildflowers persist, you can:

- Join a local Field Naturalists, Environment, Friends of, or Landcare group.
- Ask your Shire to include any wildflower areas you know of in their roadside conservation plan.

If you own or manage land:

- Avoid any kind of earthworks in areas with wildflowers and native grasses.
- Avoid the application of herbicides and fertilizers.
- Talk to DSE Biodiversity Officers about ecological burns and kangaroo grazing management.
- Talk to CMA and DPI officers about fencing and grazing management.
- Control rabbits.
- Identify and remove perennial weeds.
- Talk to Trust for Nature Victoria about Conservation Covenants.

For more information:

Goulburn-Broken Catchment Management Authority
(03) 5820 1100 www.gbcma.vic.gov.au

North East Catchment Management Authority
(02) 6043 7600 www.necma.vic.gov.au

Departments of Sustainability and Environment, and Primary Industries
Benalla (03) 5761 1611 or Wodonga (02) 6043 7900
www.dse.vic.gov.au www.dpi.vic.gov.au

OTHER REFERENCES

Corrick, M. & Fuhrer, B. 2001. *Wildflowers of Victoria*
Costermans, L., 1992. *Native Trees and Shrubs of South-eastern Australia*
Cunningham, G., Mulham, W., Milthorpe, P. & Leigh, J. 1981. *Plants of Western New South Wales*
Lunt, I., Barlow, T. & Ross, J. 1998. *Plains Wandering Viridans*. 2007. *Wild Plants of Victoria* (CD)
Walsh, N.G. & Entwistle, T.J. 1999. *Flora of Victoria*

ACKNOWLEDGMENTS:

Thanks to those who provided comments on this guide. Thanks also to Leigh Catchment Group for allowing the use of their brochure format. Map produced by Phi-R Pty Ltd

Compiled by **Mary Titcumb** for Department of Sustainability and Environment, and **Sally Mann**.

Published by **GBCMA** © Copyright of content owned by GBCMA, 2009.

Citation: Titcumb, M. (DSE) & Mann, S. (2009) *Wildflowers of the Foothills and Mountains of Northeastern Victoria*, Goulburn Broken Catchment Management Authority, Shepparton.

ISBN: 978-1-920742-18-8

Disclaimer: This information may be of assistance to you but the State of Victoria and its employees do not guarantee that the information is without flaw of any kind or is wholly appropriate to your purposes and therefore disclaims liability for any errors, loss or other consequences which may arise from you relying on this information.

Cover Photo by Glen Johnson

Designed by **Colourfield Creative** www.colourfield.com.au

2013

©Copyright - Design - Colourfield Creative 2013

Wildflowers of the Foothills and Mountains of Northeastern Victoria



Wildflowers

of the Foothills and Mountains
of Northeastern Victoria

Orchids & Ferns



Common Bird-orchid
Chiloglottis valida
IH



Golden Moths
Diuris chryseopsis
MT



Nodding Greenhood
Pterostylis nutans
MT



Rosy Hyacinth-orchid
Dipodium roseum
MT



Austral Ladies' Tresses
Spiranthes australis
EC



Slender Sun-orchid
Thelymitra pauciflora
BC



Common Maidenhair
Adiantum aethiopicum
RZ



Necklace Fern
Asplenium flabellifolium
PG



Green Rock-fern
Cheilanthes austrotenuifolia
IH



Fishbone Water-fern
Blechnum nudum
MT

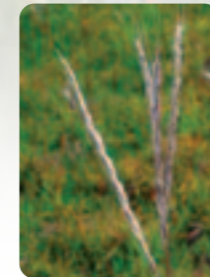


Mother Shield-fern
Polystichum proliferum
IM



Austral Bracken
Pteridium esculentum
MT

Grasses



Red-leg Grass ~
Bothriochloa macra
RZ



Long-hair Plume-grass
Dichelachne crinita
JH



Weeping Grass ~
Microlaena stipoides
MT



Bristly Wallaby-grass
Austrodanthonia setacea
LR



Flower CSU
20 sp of Wallaby-grass



Common Hedgehog-grass ~
Echinopogon ovatus
PG



Dense Spear-grass
Austrostipa densiflora
IH



Flower MT
15 sp of Spear-grass



Kangaroo Grass ~
Themeda triandra
IM



Common Tussock-grass
Poa labillardierei
MT



Flower CSU
20 native, 6 introduced sp



Red-anthered Wallaby-grass ~
Joycea pallida
MT

Lilies



Pale Vanilla-lily
Arthropodium milleflorum
MT



Chocolate Lily
Arthropodium strictum
MT



Small Vanilla-lily
Arthropodium minus
MT



Milkmaids ~
Burchardia umbellata
PM



Bulbine Lily
Bulbine bulbosa
MT



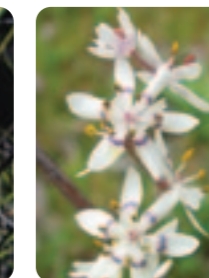
Yellow Rush-lily ~
Tricoryne elatior
MT



Common Fringe-lily
Thysanotus tuberosus
MT



Twining Fringe-lily
Thysanotus patersonii
RZ



Common Early Nancy ~
Wurmbea dioica ssp. *dioica*
MT



Black-anther Flax-lily
Dianella admixta
MT



Tasman Flax-lily
Dianella tasmanica
IM



Nodding Blue-lily ~
Stypandra glauca
MT

Lilies



Wattle Mat-rush
Lomandra filiformis ssp. *coriacea*
PG



Spiny-headed Mat-rush
Lomandra longifolia ssp. *longifolia*
MT



Many-flowered Mat-rush
Lomandra multiflora ssp. *multiflora*
IH

Sedges



Common Woodrush
Luzula meridionalis
IH



Common Bog-sedge
Schoenus apogon
TD



Tassel Sedge
Carex fascicularis
PG



Variable Sword-sedge
Lepidosperma laterale
LR



Leafy Flat-sedge
Cyperus lucidus
MR-K



Pale Rush
Juncus pallidus
TD



Tall Sedge
Carex appressa
MT



Thatch Saw-sedge
Gahnia radula
MR-K



Red-fruit Saw-sedge
Gahnia sieberiana
PG

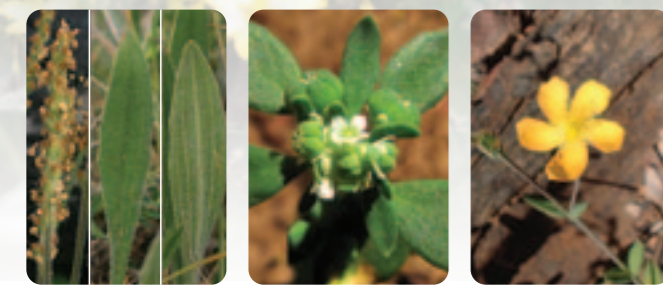
Herbs

Herbs

Herbs

Sub-Shrubs & Twiners

Bioregions of the Foothills and Mountains, Northeastern Victoria



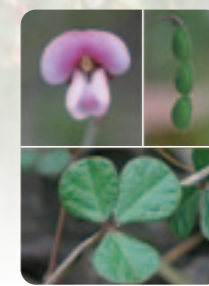
Variable Plantain
Plantago varia
PG



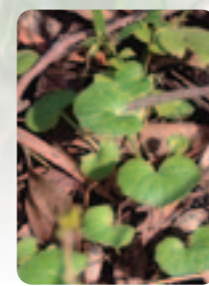
Small Poranthera ~
Poranthera microphylla
IM



Small St John's Wort
Hypericum gramineum
MT



Southern Tick-trefoil
Desmodium gunnii
PG



Kidney-weed ~
Dichondra repens
MT



Prickly Woodruff
Asperula scoparia
IM



Many-stemmed Bluebell
Wahlenbergia multicaulis
KW



Tall Bluebell
Wahlenbergia stricta
PM



Rock Isotome
Isotoma axillaris
CF



Honey-pots
Acrotriche serrulata
MT



Creeping Bossiaea
Bossiaea prostrata
IM



Blue Finger-flower ~
Cheiranthra cyanea var. cyanea
MT



Blue Pincushion ~
Brunonia australis
MT



Austral Bear's-ear ~
Cymbonotus preissianus
MT



Common Bottle-daisy
Lagenophora stipitata
IH



Shady Wood-sorrel
Oxalis exilis
PC



Showy Violet
Viola betonicifolia
MT



Ivy-leaf Violet
Viola hederacea
MT



Slender Dock
Rumex brownii
IH



Common Raspwort
Gonocarpus tetragynus
MT



Hill Raspwort
Gonocarpus elatus
TD



Common Hovea
Hovea heterophylla
MT



Dwarf Boronia
Boronia nana var. hyssopifolia
MT



Common Rice-flower
Pimelea humilis
MT



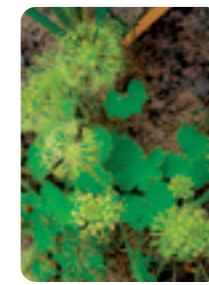
Variable Billy-buttons
Craspedia variabilis
CF



Button Everlasting
Helichrysum scorpioides
TD



Scaly Buttons
Leptorhynchus squamatus
MT



Stinking Pennywort
Hydrocotyle laxiflora
RZ



Hairy Speedwell
Veronica calycina
PG



Austral Bugle ~
Ajuga australis
MT



Variable Willow-herb
Epilobium billardierianum ssp. cinereum
IM



Tall Sundew
Drosera peltata ssp. auriculata
MT



Grass Triggerplant
Stylidium armeria
EC



Running Postman ~
Kennedia prostrata
CF



Love Creeper ~
Comesperma volubile
MR-K



Common Apple-berry
Billardiera mutabilis
IM



Clustered Everlasting
Chrysocephalum semipapposum
MT



Australian Buttercup
Ranunculus lappaceus
MT



Creamy Candles
Stackhousia monogyne
MT



Variable Crane's-bill
Geranium sp. 2
MT



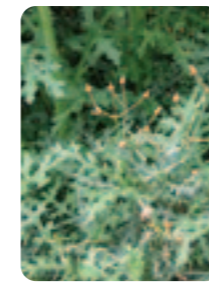
Bidgee-widgee
Acaena novae-zelandiae
IM



Prickly Starwort
Stellaria pungens
IH



White Elderberry ~
Sambucus gaudichaudiana
MR-K



Rough Fireweed
Senecio hispidulus
MT



Scrub Nettle
Urtica incisa
TD



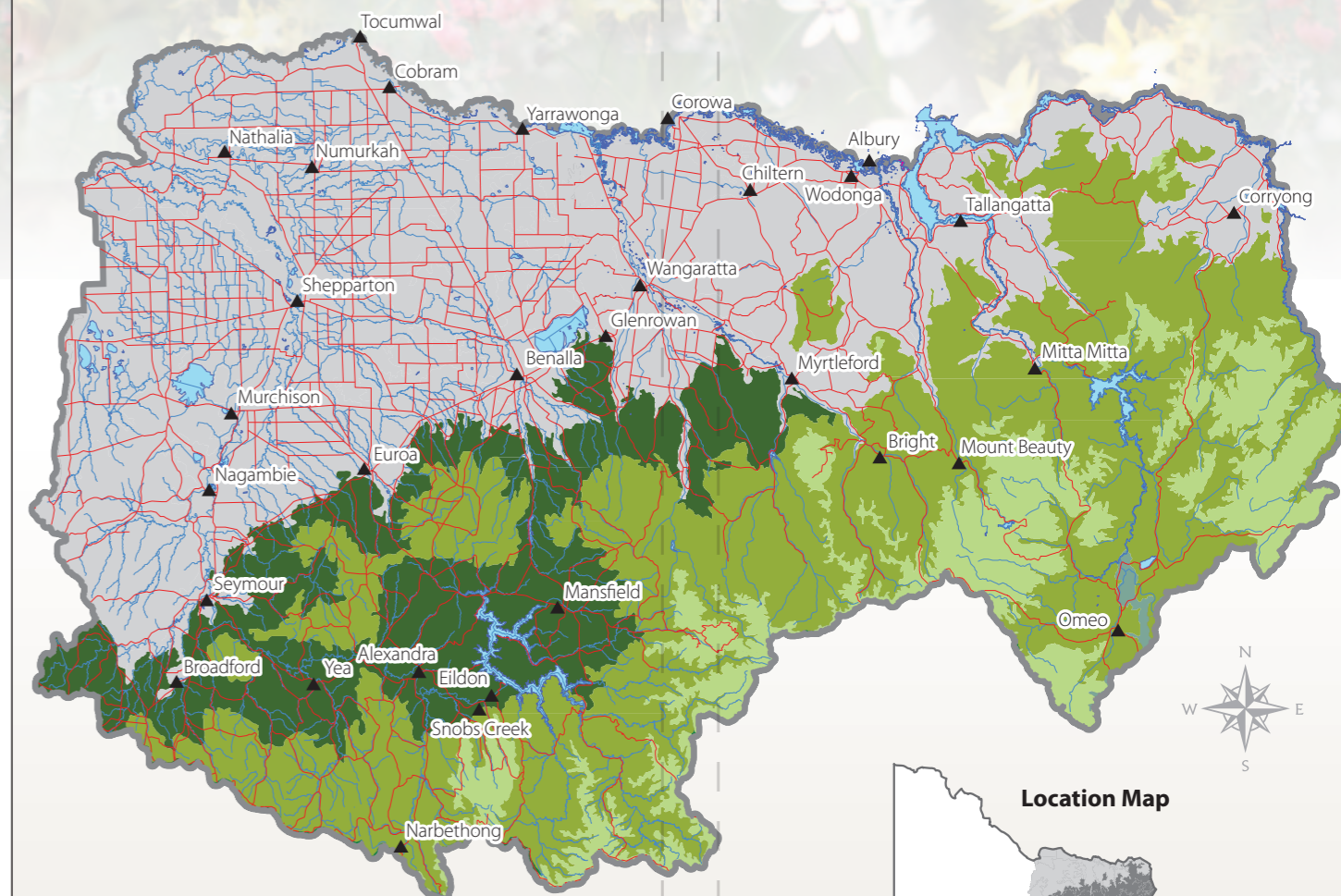
Twining Glycine
Glycine clandestina
MT



Purple Coral-pea ~
Hardenbergia violacea
MT



Mountain Clematis
Clematis aristata
IM



WEBSITES

Biodiversity Information Resources and Data (BIRD) www.bird.net.au
 CSU Herbarium www.csu.edu.au/herbarium
 Environment Australia www.ea.gov.au
 FloraOnline <http://plantnet.rbg.vic.gov.au/floraonline.htm>
 Greening Australia www.greeningaustralia.org.au
 Landcare Gateway www.landcarevic.net.au
 Land for Wildlife www.dse.vic.gov.au/notes/
 National Herbarium of Victoria
www.rbg.vic.gov.au/research_and_conservation/herbarium
 Nature Web www.natureweb.org.au
 North East SWIFFT www.swift.bird.net.au
 VicVeg Online www.vicveg.net.au

PHOTOGRAPHY:

All photographs shown here (apart from Paul Gullan/Viridans Images) have been donated. The initials of the photographer/organisation is listed below each image. BC Brad Costin, CF Chris Findlay, CSU Charles Sturt University Herbarium, EC Eileen Collins, IH Ian Higgins, IM Ian McCann courtesy of The State of Victoria, Department of Sustainability and Environment collection, JH Jo Heard, KW KarenWales, LR Lyndall Rowley, MR-K Mike Robinson-Koss, MT Mary Titcumb, PC Dr Peter Curtis, PG Paul Gullan/Viridans Images, PM Paul McKenna, RZ Reto Zollinger, TD Tim D'Ombrian.

Legend

- Central Victorian Uplands
- Highlands - Northern Fall
- Victorian Alps
- East Gippsland Uplands
- Streambanks and Wetlands
- See "Wildflowers of the Plains and Low Hills of Northeastern Victoria"